



KONICA MINOLTA



AccurioLabel 400

SEE THE POTENTIAL OF OUR NEXT GENERATION LABEL PRESS

RETHINK LABEL PRINTING



Colour narrow web
digital label press

Giving Shape to Ideas

INTRODUCING THE ACCURIO LABEL 400 FROM KONICA MINOLTA

GO FOR SUCCESS IN LABEL PRINTING

Label converters and commercial printers are faced with an increasing number of print jobs for small to medium editions, which they are expected to produce in ever-shorter processing times. With conventional flexo and offset printing, it is hardly possible to produce such orders profitably. Flexible digital printing, however, allows producing short-run jobs easily and with a maximum of efficiency.

The AccurioLabel 400 is the consequent next step in Konica Minolta's successful journey in the digital label printing segment and will complement the AccurioLabel 230, one of the top-selling digital label presses in Europe. Label converters and professional print providers with higher print volumes benefit from higher print speeds, white toner, longer print runs and user-friendly automation tools.

The AccurioLabel 400 offers outstanding productivity, brilliant image quality and surprising ease of use. This is your answer to the challenge of shorter delivery times, personalisation and versioning as well as instant production of on-demand print runs – which makes it your perfect tool to use in conjunction with existing analogue equipment and to diversify into new markets.



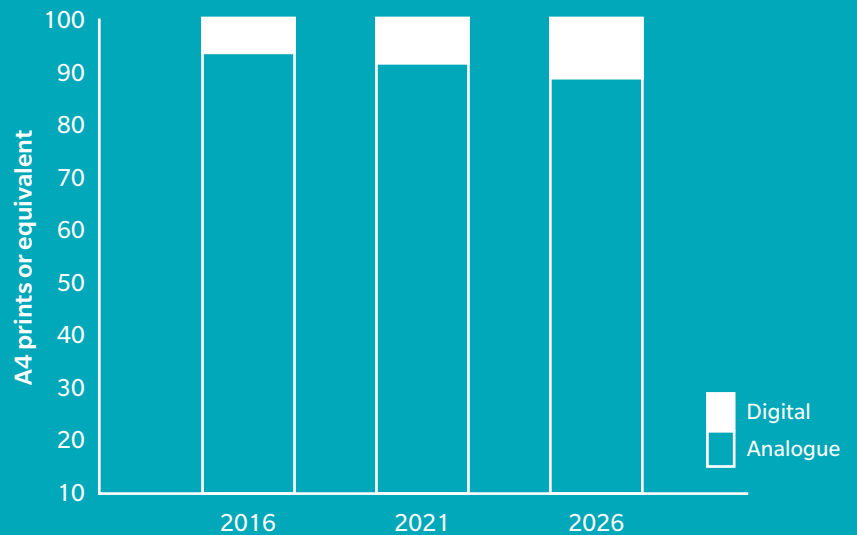
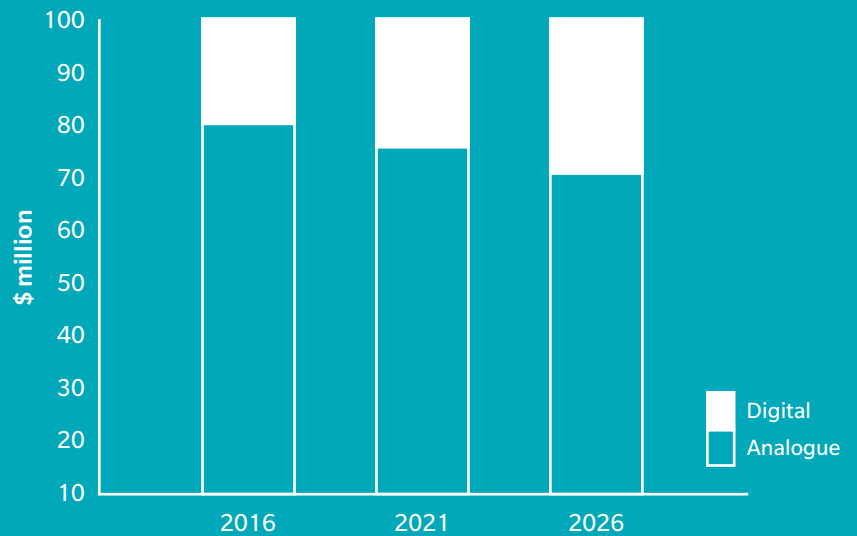
MARKET TRENDS

GROWTH MARKET: DIGITAL CONTINUES TO CONQUER THE LABEL PRINTING MARKET

The label printing market is considered one of the market segments that will continue to grow in the future. According to recent surveys, the majority of new, narrow-web label presses installed worldwide is digital.

The global printed label market was valued at \$41.75 million in 2021 and is expected to grow at rates of around 6% per year.

Evolution of digital print shares, 2016–2026 (%)



Source: The Future of Printed Labels to 2026, Smithers Pira

The global market for digitally printed labels **grows at more than**

6% per year.

In 2022,

45%

of the worldwide narrow web label press installations will be digital.

More than

50%

of label converters have digital machines.

ALL NEW FEATURES AT A GLANCE

RETHINK LABEL PRINTING



HIGH PRODUCTIVITY

Printing speed

- Maximum print speed of AccurioLabel 400 is 39.9 meters per minute when printing in CMYK mode and can go down to 20 meters per minute when printing CMYK+W
- Print speed may also vary depending on selected media types (39.9, 34.2, 30, 20 or 15 meters per minute)

Higher run lengths

- Total length per job can be set to max. 3,000 linear meters
- Unwinder and rewinder of AccurioLabel 400 each have a capacity for rolls of 800 mm in diameter
- Larger toner hopper (reservoir) for uninterrupted production

Selectable controller

- Superb price-performance ratio:
IC-611 (Konica Minolta)
- High productivity for VDP: IC-320L (Kodak Creo)

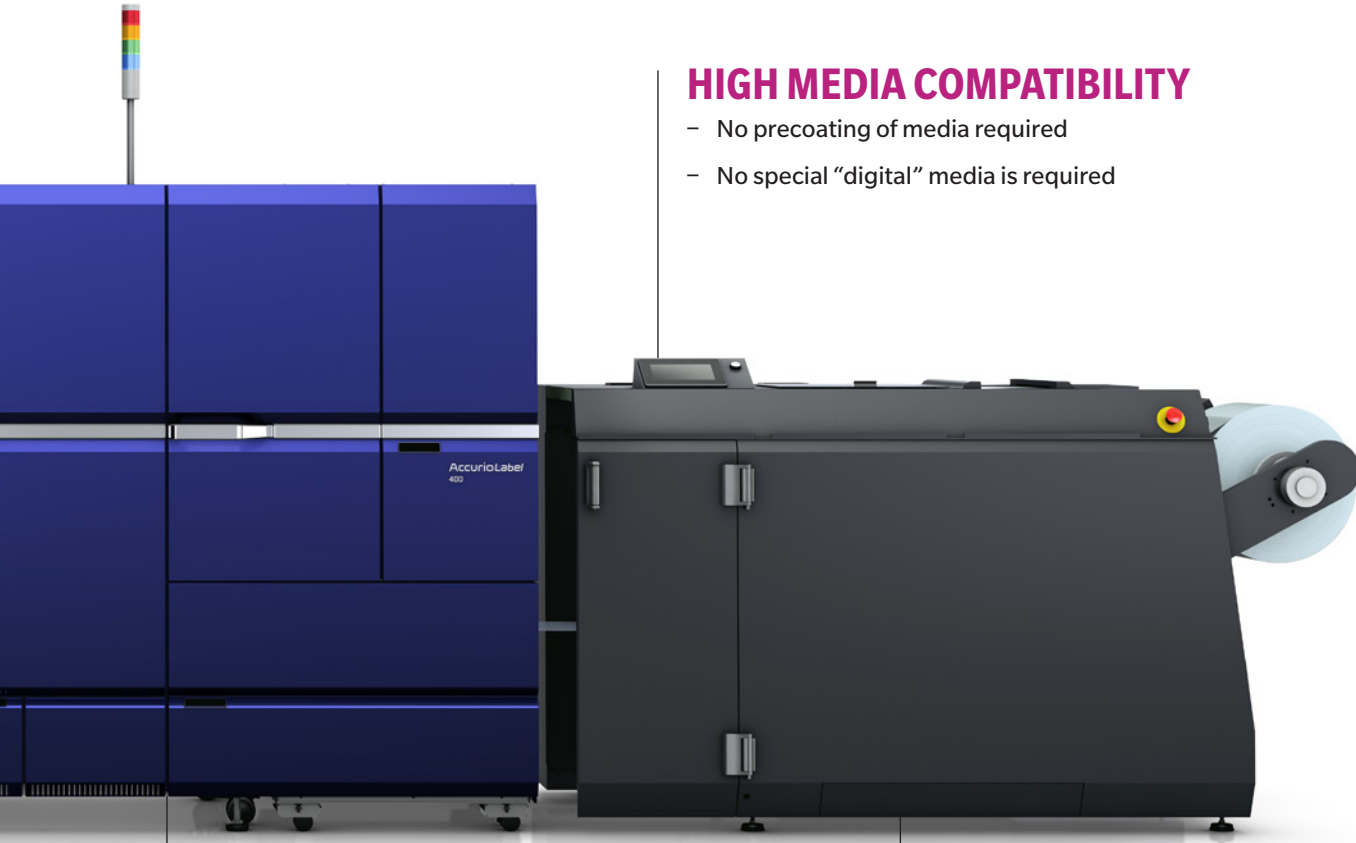
PRINT JOB VARIETY

New 5th colour station with white toner

- The capability of printing white enables you to cover a wider range of print applications
- High level of white opacity with one imaging hit

Overprinting

- AccurioLabel 400 comes standard with overprint sensor kit
- Registration of print jobs to pre-printed media is now possible whenever needed



HIGH MEDIA COMPATIBILITY

- No precoating of media required
- No special “digital” media is required

EASE OF USE

AccurioPro Flux with Label Impose

- PDF-based workflow tool
- Combine and impose label jobs with Flux Label Impose, using templates (ideal for changing print layouts with similar die plates)
- Adding eye-marks, arranging artwork, gang-up printing of different layouts and exporting die-lines through a single intuitive user interface
- Easily apply variable data printing (VDP) functionalities with just a few mouse clicks

Intuitive touch panels

- AccurioLabel 400 is operated from the main touch panel of the print engine as well as easy-to-use touch screens for unwinder and rewinder
- A tablet can be used instead of the main touch panel to operate freely around AccurioLabel 400

OUTSTANDING QUALITY

Resolution on a par with offset

- Excellent resolution of 1,200 dpi (3,600 dpi equivalent) x 2,400 dpi produces a high-precision print image

Intelligent Quality Care

- Real-time colour stability control
- Real-time colour registration control
- Automatic calibration
- Automatic density adjustment
- Profile creation

Flux Label Impose

RETHINK WORKFLOW

For reasons of efficiency and economy, label-manufacturing printers need to automate and integrate their workflow as much as possible. Equally important is the optimised use of media to avoid any waste of label material. This is why multiple labels are usually imposed across the width and length of the label web – a process that can easily become a complicated and time-consuming procedure if performed manually.

The Flux Label Impose software tool offers the perfect solution to this challenge: the application provides a simple and intuitive user interface for the automatic imposition and preparation of label jobs for printing.

KEY FEATURES

Job editing

- **Automatic creation of label repetitions:** The application facilitates and automates the creation of label repetitions on the label web.
- **Variable data content:** The processing of variable data content is simple and straightforward and can easily be incorporated into the automatic label repetitions.
- **Personalisation:** Adding of VDP content from CSV file as text, barcode and QR code
- **Adjustable spacing:** Operators can freely and individually adjust the spacing between columns and rows as required.
- **Adding standard and custom eye marks:** The application offers complete flexibility in adding standard and custom eye marks in any desired position for offline finishing.
- **Arranging artwork:** Users can choose between automatic and manual arrangement of artwork for the label layout.
- **Gang-up printing:** A single sheet can be imposed with just one or various selected artwork motifs.
- **Die cutting tools:** With the ability to detect additional separations (die lines, spot varnish, foil, etc.) and export them to PDF, Flux Label Impose facilitates the production of the die cutting tools and enables additional decorations on labels.
- **Preflight:** Checks PDF files for missing fonts, images with a resolution too low and transparencies to avoid printing problems.



TYPICAL APPLICATIONS

LABEL SUBSTRATES

Glossy or matt adhesive paper, YUPO, PET, PP. An extended list of supported substrates from the major vendors of self-adhesive media is provided upon purchase of the AccurioLabel 400.



BEVERAGES

Create personalised and unique labels.



FOOD

For short to medium production of labels for local produce.



WINES & SPIRITS

Create wonderful labels for wines and spirits simply by producing great quality on untreated textured papers.



COSMETICS

Private label products, ...



HOUSEHOLD

Allows for easy production of different versions of the same label.



INDUSTRIAL

For GHS labels, chemical products, identification, ...

ENABLING NEW PRINT APPLICATIONS.

The newly added 5th colour station with white toner can be used for a broad range of applications. The high opacity white adds “no-label look” layouts to the range of print products possible with AccurioLabel 400.





SEE THE POTENTIAL.

The “no-label look” can be creatively combined with subtle designs, using the combination of process colours and selected use of high opacity white.





RETHINK WHAT LABELS CAN DO FOR YOUR BUSINESS.

With white toner, you can now create stunning label designs with colourful and shimmering effects on metallic substrates – like here for coffee beans.



THE LABEL PRINTING BUSINESS IS VIBRANT, DYNAMIC AND INCREDIBLY EXCITING.



The use of white toner opens up amazing new possibilities for creative label design – as shown here for wine bottles.



REALISE THE POTENTIAL.

The demand for more sustainable label production is increasing – rightly enough. With the capability of printing on plant-based substrates, the organic food and cosmetic sectors can be supplied with prints from AccurioLabel 400.





IGNITE YOUR PRINT POSSIBILITIES.

Same goes for the huge sector of wine labels: With sustainable label substrates – such as grass paper – AccurioLabel 400 makes your label designs stick out with high quality combinations of CMYK elements, white toner and embellishment with varnish and foil effects. Digital label printing has been on the rise during recent years, and we see print volumes growing even more in the future.

We are here to create new label opportunities together with you. Please contact us for more information.

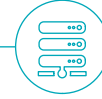
10 GOOD REASONS

to change from an analogue workflow to digital label printing with the AccurioLabel 400.



1. PERSONALISE YOUR OUTPUT

Konica Minolta's AccurioLabel 400 lets you print variable images and text, fully integrated into your digital workflow. Imagine the many ways in which personalised label printing can help your business.



2. HANDLE MULTIPLE SKUS

Short runs of different labels are easy and quick to produce, with no additional prep-time and make-ready. Short-run printing can be more effective and profitable.



3. SHORTEN YOUR LEAD TIMES

With no prepress setup time, personalised labels can start printing without delay.



4. LOWER YOUR COSTS

Think about it: Less waste, zero plates used, minimal labour requirements – it all adds up to lower running costs and increased profitability.



5. MINIMAL FOOTPRINT

The AccurioLabel 400 is a compact digital label press with just 12' separating the unwinder and the rewinder, so that it will fit into the tightest of spaces on your production floor.



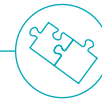
6. IMPROVE CONSISTENCY

Complete colour management control ensures consistency across the substrate from the beginning to the end of your entire press run.



7. SIMPLIFY YOUR OPERATION

Digital control is far simpler than that of conventional analogue systems – and you can queue jobs right from your touch screen control panel, making reprints faster and more cost-effective.



8. COMPLEMENTARY TO YOUR EXISTING PRESSES

The AccurioLabel 400 perfectly complements your analogue and digital production flow, allowing you to shift even higher print volumes to your digital output stream.



9. HIGHER PRODUCTIVITY

Larger roll capacity, longer print runs, ease-of-use and effective automation tools make your label printing a no-brainer.



10. GET ON THE INSIDE TRACK OF INNOVATION

By partnering with Konica Minolta, you leverage the power of our cutting-edge innovations in digital production, backed by our market leadership for digital label presses in Europe.



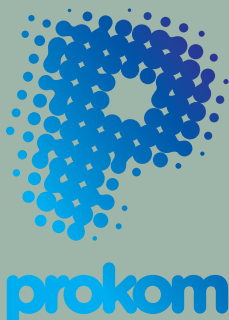
PROKOM – CONNECT WITH INDUSTRY CONSULTANTS

RETHINK LABEL PRINTING

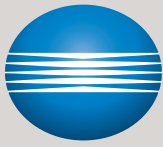
AND GAIN VALUABLE INSIGHT

Konica Minolta is a proud supporter of the independent user association PROKOM, who offers its members the ability to connect with industry consultants and gain valuable insights.

Structured learning programmes support all elements of your company's business. From business planning through sales and marketing advice, you will have the opportunity to link in with the PROKOM team, connecting you with companies across both Europe and North America.



For more details please visit: www.prokom.org



KONICA MINOLTA

TECHNICAL SPECIFICATIONS

RETHINK LABEL PRINTING

SYSTEM SPECIFICATIONS

Technology	Dry Toner Electrophotography
Colour	CMYK, white (optional)
Resolution	Main scan: 1,200 dpi (3,600 dpi equivalent) Sub scan: 2,400 dpi (8 bit)
Tone scale	256 steps (8 bit), 16,700,000 colours
Paper widths	330 mm fixed (standard), 250 to 330 mm selectable (replacement of certain parts necessary)
Max. printed image width (length)	320 mm (1,294 mm)
Media thickness (weight)	76 to 270 µm (62 to 256 g/sqm)
Supported substrates	Paper, PP, PET (tack or non-tack, incl. textured paper, film etc.)
Printing speed	39.9 m/min. (CMYK), down to 20 m/min. (CMYK+W), 39.9, 34.2, 30, 20, 15 m/min. depending on media types
Machine dimensions (W x D x H)	7,500 x 1,230 x 1,620 mm
Machine footprint (W x D)	9,700 x 3,200 mm (incl. operating space)
Machine weight	1,800 kg
Web control	Integrated web guide system (BST) on infeed section and rewinder
Max. roll diameter	800 mm (unwinder and rewinder)
Shaft diameter	3 inches (76 mm)

CONTROLLER

Konica Minolta Controller	IC-611
Kodak (Creo) Controller, optional	IC-320L

POWER & AIR SUPPLY

Print engine	3x 200-240 V, 25 A, 1-phase, 50-60 Hz
ICCU	1x 200-240 V, 3 A, 1-phase, 50-60 Hz
Winders	1x 200-240 V, 32 A, 1-phase 50-60 Hz (incl. 300 mA RCCB, Type A)
Compressed air	6 bar, min. 20 l/min., 8 mm tube diameter

- The support and availability of the listed specifications and functionalities varies depending on operating systems, applications and network protocols as well as network and system configurations.
- The actual life of each consumable will vary depending on use and other printing variables including coverage, size, media type, ambient temperature and humidity.
- Specifications are subject to change without prior notice, please refer to technical documentation for site inspection.
- Konica Minolta does not warrant that any specifications mentioned will be error-free.
- All brand and product names may be registered trademarks or trademarks of their respective holders and are hereby acknowledged.